

WISEFIX TECHNICAL WORKS LLC



**WiseFix**  
QUALITY, TRANQUILITY, 24 X 7

Intelligent | Precise | Efficient



Integrated Facility Management

# WiseFix Technical Works LLC

## COMPANY PROFILE



**WiseFix**  
QUALITY, TRANQUILITY, 24 X 7

Discover our difference! Discover efficiency  
and Peace of Mind; because:-

**YOUR PEACE OF MIND IS OUR BUSINESS!**



## **Introduction**

*WiseFix Technical Works LLC is Mechanical, Electrical and Plumbing business unit – A premium engineering and contracting company. We provide the skills, expertise, experience and resources essential to meet the demands of today's fast track projects. We execute all types of MEP works locally for high rise towers, commercial and residential buildings, apartments/villas, offices, retail outlets, Hotels, restaurants, institutions and others being known for having a high quality, cost effectiveness and time bound services. The aim of the company is to provide quality services and to deliver efficient, safe and purpose specific HVAC & MEP designs. Apart of being a contracting company, means we can assist our customers to locate solutions-specially engineered to meet their rapidly changing needs. Our management team is equipped to handle solutions for a dynamically evolving industry.*

*As a full-service firm, we do specialized in maintenance services with the full range of preventive and reactive maintenance programs, as well as a wide range of one-off service which will be enhanced the value of our client investment at a minimum cost. We have qualified and fully trained technicians with hands on experience in the local construction industry, MEP Services, Properties Improvement and Maintenance in particular.*

*Our engineers are licensed and approved in Dubai Municipality, DEWA, Dubai Civil-Defence, Trakhees and TECOM Authority.*

### **Our Mission**

*Our mission is client satisfaction and value added customer service. We are extremely cost competitive and you can relax safe in the knowledge that we have a "right first time, on time approach". Our success is mainly due to the dedication of a highly skillful team, wherein our main asset. We value their contribution and will always continue to invest in developing the skills of our team.*

### **Our Vision**

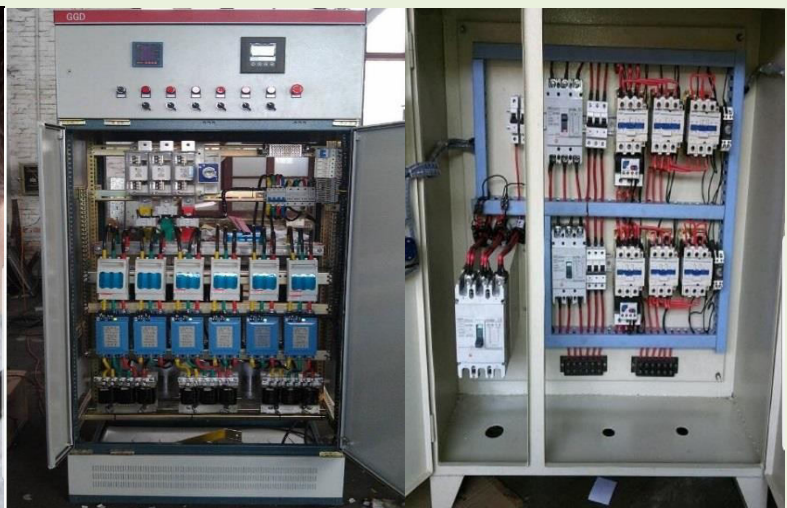
*Our goal is to be one of the leading business companies in the Middle-East in line with the nature of our business. To give Quality Management Program that puts our team to be experts to provide service satisfaction and to be the industrial leader in environmentally responsible practices and energy saving products, while still being able to conduct our business in a manner that is environmentally sustainable.*

## ELECTRICAL SERVICES

*Evolved as the natural choice over cable for electrical system designers. Apart from the obvious benefit of low voltage drop, bus bar risers make the system flexible, reusable and expandable while improving the efficiency.*

### ***ELECTRICAL PANELS, CONTROLS & TESTING:***

- *Installation of Electrical DB and dressing.*
- *Interior and Exterior building wiring and fixture.*
- *Control Panels designing & installation for Motor & Pumps.*
- *Electrical Panels and building wiring testing.*
- *Extra Low Voltage system installation.*
- *Building Management System and Automation.*
- *CCTV & DVR System Installation and Commissioning.*
- *Parking & Gate Barrier control system.*
- *Access Control System Installation and Commissioning.*
- *Audio Video System.*
- *Intruder Alarm System.*





## PLUMBING SERVICES

### **WATER SUPPLY SYSTEM:**

- *Domestic Cold and Hot Water Systems*
- *Water transfer and booster pumps*
- *Water tanks*
- *Water heaters (central and domestic)*
- *Cool water systems*
- *Water filtration*
- *Water treatment RO System, etc.*
- *Pumps Motors and Control's Panels.*



### **DRAINAGE SYSTEMS:**

- *Underground / Above ground Drainage Systems that include pipes and fittings*
- *Floor drains*
- *Cleanouts*
- *Rain water outlets*
- *Catch basins*
- *Grease Traps*

### **SANITARY WARES:**

- *Bidets , Water Closets and Wash Hand Basins*
- *Jacuzzi , Shower trays and Bath Tub Mixer*
- *Whirlpools*
- *Kitchen sink*
- *Floor Traps.*



## HVAC SERVICES

- Heat Load Calculation
- GI and Pre insulated ducts including vanes, stiffeners, Channels and access panel branches
- Air Balancing and Water Balancing
- FCU including Coil, Motors, Fans, Drain Pan, Filters, Vent, Balancing and Isolating Valve, All Protective Devices, Drain to waste and all necessary Electrical connection
- Volume control damper
- Fire Controlling Dampers & System
- Staircase Pressurization system
- Supply and return grill diffusers
- Supply and return linear bar grill
- Air free discharged louver
- Wall mounted and ceiling exhaust fan
- Plenum box, Rubber insulation and Shut – Off Valves.
- All types of Air Filters, Filter dryer & Fabrication of Filter's.

### **Installation, Piping & Ducting, Retrofit, Commissioning; Maintenance & Repairing**

- Split Unit (Ducted and Wall/Ceiling Mounted)
- Package System
- FCU's and Air-Handling's System
- Building Automatic System
- Energy Management Low voltage System
- Programmable Digital Adoptive & PI Control system
- Mechanical & Electronic Thermostat

### **CHILLERS & CHILLED-WATER SYSTEM**

- Reciprocating Compressors Chillers.
- Scroll and Screw Compressors Chillers.
- Centrifugal Chillers.
- Chilled Water Piping, Chilled Water Pumps & Motors.
- Refrigeration System & Cold Storage.
- Walk- in Cooler and Chillers.
- Industrial & Marine Refrigeration System.
- Restaurant Equipment, Food.
- Beverage Refrigeration Systems.
- Retrofit of Chillers System, Package and Split units.
- Chemical testing, dosing, water treatment of Closed & Open Loops systems.



## **VRF / VRV VARIABLE REFRIGERATION FLOW SYSTEM:**

*WiseFix Technical Engineers and professional Technicians are specialized for the installation and commissioning of VRF system; includes Multi Outdoor & Indoor Units, refrigerant piping, refrigerant pipes and distributors, pipes & duct Insulation, Air-ducting system, VRF Controls and Inverter System.*

*We guarantee's to deliver standard quality and satisfactory trouble free system installation and commissioning the system to its highest performance.*

*We under take maintenance contract after warranty period.*



## WiseFix Technical Works LLC



**WiseFix**  
QUALITY, TRANQUILITY, 24 X 7

### SKILLED & TRAINED STAFF

### You've come to the Right Place!

*Our qualified team of skilled and professional Technicians works under the close supervision of experienced and competent Supervisors & Engineering staff. We understand the importance of training & motivation of our employees at all levels. We always ensure safe working environment for all our employees & their surroundings with regular health & safety meetings. The company carries insurance in respect of third party, workmen's compensation and professional indemnity certificates. Their response will be swift, resourceful and professional. We combines the best of values with a forward thinking approach to new technology.*



### MAINTENANCE

*We started with limited work force gaining a reputation for quality, quick response, efficiency and customer satisfaction. It is through careful husbanding of this reputation. We work closely with our suppliers, sub-agencies and consulting engineers to ensure the satisfaction of customer requirements. We are mostly recommended by our Customers to their business network, family and friends who are in need of a trusted contractor. These recommendations and words of praise from our customers speak more than written words. By creating a partnership of trust with clients, WiseFix Technical is able to work together with them to achieve a common goal. We believe our advantage comes from Quality services.*





**WiseFix**  
QUALITY, TRANQUILITY, 24 X 7

## MEP-FITOUT SERVICES PROGRAM

The various MEP activities are divided in various stages as under:

**A. Embedded services on concrete structures:**

- *Like Openings*
- *Sleeve and Conduits*
- *Pipes etc.*

**B. Embedded services on Block walls:**

- *Like DB enclosures*
- *Water supply pipes etc.*

**C. MEP first fix items & MEP Second Fix Items:**

- *Anchoring supports for the services*
- *Pipe work*
- *Ductwork*
- *Cable trays & trucking*
- *Wire pulling etc.*
- *This activity comprises of all services over the ceiling Void with a view to give false ceiling grid clearance.*

**D. MEP service installations in low level :**

- *Installation of services below false ceiling levels*
- *Electrical Panels*
- *Sanitary fixtures*
- *Chillers and Pumps etc.*

**E. MEP Final Fix:**

- *Installation of decorative and terminal devices*
- *Light fixtures*
- *Switches and Mixers*
- *Thermostats / Control System*
- *Low current devices like CCTV cameras, speakers etc.*

**F. Completion of fit out activity:**

- *Inspection by DEWA for Power On.*
- *Commissioning of various systems.*
- *Inspection by Civil-Defence*
- *Inspection by Dubai Municipality*
- *Project Final Delivery and Handover to Client.*



**WiseFix**  
QUALITY, TRANQUILITY, 24 X 7

## MAINTENANCE SERVICES PROGRAM

### **General Maintenance:**

*Investors & property Owners, his assets and proud homeowners, who is looking for a complete Maintenance & Emergency response solution's, **WiseFix** is "Always at your Service" and offer a comprehensive collection of preventive, reactive & corrective maintenance services for Interior & Exterior of the High Rise Buildings & Properties*

#### **❖ Services under this maintenance program includes such as:**

- *Service & Maintenance of A/C Units, Fixed Electrical Fittings, Plumbing Units, Water Pumps & Motors and Maintenance, repairing's of Building Civil Works.*
- *Defective MEP units repairing, Water Tanks cleaning, Air Duct System Cleaning.*
- *Property Improvement / Upgrading of Services, Units and Systems.*

*In addition, a wide choice of extra services may be added to cater to all requirements, in order to satisfy our valued client individual preferences.*

### **CHILLERS, HVAC-R & MEP SYSTEMS:**

#### **❖ Exclusive Services under this maintenance program includes:**

- *Annual Maintenance Contract includes major & minor services, quarterly services of indoor & outdoor units, with comprehensive/Full Protection Plan or Schedule/Plan Preventive Maintenance.*
- *Annually and quarterly Inspections of Assets and maintaining Quality checks sheets.*
- *Predictive Inspection and managing systems to control unforeseen break-down/ shut down.*
- *Rapid Response to Emergency situation for the Business Continuation.*
- *Energy Management System and Control's during Occupied /Unoccupied condition.*
- *Repairing of MEP Services, Equipment and HVAC system, Controls & Electrical Works.*





## INTERIOR DESIGN & FIT-OUT SERVICES

**WiseFix**  
QUALITY, TRANQUILITY, 24 X 7

*WiseFix Technical Works LLC is a fast moving Dubai based company. We are total project provider for Interior Design and Fit-out works. Our approachable and experienced in-house team offers a range of services from interior design, build and project management, to helping our client source one-off pieces to make their properties unique.*

*We place our clients' needs at the heart of the design process, working closely to given briefs, budgetary and style requirements. We guarantee consistency on the work to a high degree of performance irrespective of the size of the contract or the number and complexity involved.*

### **1) Painting and Wall Furnishing**

*Whether you want to just freshen up a place or change the style and peel off your entire space, our expert craftsman will make you happy. WiseFix Technical Works LLC expert craftsman can perform all levels of prep work on your interior projects. Everything from new walls that just need some color to extensive re-moldings. Our craftsman have an extensive training on the techniques and materials that are best suited for each individual project which will not only give you an excellent paint job but turn any space into your Home.*

#### **Includes:**

- Curtains , Wooden Blinds, Roman Blinds, Solar Glide, Roller Blinds, Vertical Blinds Magnetic Blinds, Shutters
- Wallpapers
- Interior & exterior Painting

### **2) Light Fitting**

*Whatever is your requirement, we can deliver lighting solutions to enhance the beauty of your place.*

#### **Includes:**

- Addressable Lighting Controls, Architectural Dimming & Switching Lighting Controls Area/Site Lighting, Day lighting Controls, Floodlighting, High bay/Low bay/Industrials Indoor Ceiling/Wall Mount Lighting, Landscape Lighting, Outdoor Wall Mount Lighting Post Top Lighting, Recessed Commercial Down lighting, Recessed Linear Lighting Sign Lighting, Step Lights and Track Lighting.

### **3) Joinery**

*The team of experts work with you directly to handpick internal and external items to match requirements, offering innovative designs through an extensive selection of products from our trusted suppliers.*

#### **Includes:**

- Doors fit-out, Windows fit-out, Staircases fit-out, Kitchen fit-out,
- Bars and counters fit-out, Skirting, Furniture.



#### **4) Partition**

*We provide partitioning systems that meet the needs of today's modern working environments, create space, and a partition for dividing work areas to provide practical workplace solutions and we can help you make the right choice.*

**Includes:**

- *Wood Partitions, Gypsum Partitions, Tempered glass Partitions, Aluminum Partitions Steel Partitions, Fiber Partitions, Movable walls and Folding Partitions.*

#### **5) Ceiling**

*Ceilings are an important consideration when creating the right atmosphere and ambience for your working environment. The choice of ceilings available range from standard to bespoke and plays a major part in any office refurbishment.*

**Includes:**

- *Wood Ceiling, Gypsum Ceiling, Acoustic Ceiling, Aluminum Ceiling, Steel & Fiber Ceiling.*

#### **6) Flooring**

*Our experienced staff will help you identify the perfect product for any room in your home. That commitment extends all the way through to the installation, with skilled, knowledgeable and experienced craftsman ensuring that the right products are installed in the right way. We offer quality and bespoke flooring services to suite your design needs.*

**Includes:**

- *Carpet Flooring, Raised Flooring, Ceramic Tile and Marble Flooring, Vinyl Flooring, Parquet Flooring, Solid Wood and Semi Solid Flooring.*

#### **7) Commercial Kitchen & Steel Work Fabrication:**

*We under-take full development of commercial kitchen's, Steel Fabrication's and Restaurant Kitchen / Interior development. Project will be delivered and Certified by the Municipality / Civil-Defence Authority. Our service is completely process driven and result oriented. We strive to continually improve and update our process and systems to stay in tune with the modern technology. Our client friendly engineering services, flexibility and efficient project management has contributed significantly in building long term business relationship*



# WiseFix

QUALITY, TRANQUILITY, 24 X 7





## OUTSOURCED & SOFT SERVICES

We provide a full range of soft services including office services, reception /concierge, services desk and cleaning services.

Each solution is unique and we can also provide other services that don't fit into the conventional facilities management model, but are considered non-core to our clients. WiseFix Technical, delivers an integrated facility management model which provides not only a single point of contact for a range of facilities management services, but also the ability to supply them across multiple sites. That makes for a simpler supply chain and provides cost savings for our clients by minimizing the time and manpower they need to invest.

### Cleaning Services

WiseFix Technical Services, will spend time listening to your requirements and expectations before allocating the right cleaning method and level of service. We cater all kinds of buildings, including commercial, retail, residential, hospital, government and schools, and can also provide initial cleaners/builder's where required. We recruit only the highest caliber people who undergo a schedule of rigorous training to enable them to meet and exceed the expectations of even the most demanding client.

### Outsourced Services

Properly executed, outsourced services can dramatically reduce the time you spend on non-core activities, allowing you to concentrate on what you do best.

We have extensive experience in working with clients of all kind on projects of all sizes. Our tailored services and talented team mean we are the outsourcing partners of choice across the Middle East. Our range of outsourced services includes:

- Landscaping, Pest Control, Receptionists and Security,
- Waste Management & Swimming Pool.
- External Building Rope Access Cleaning and Elevator System.

